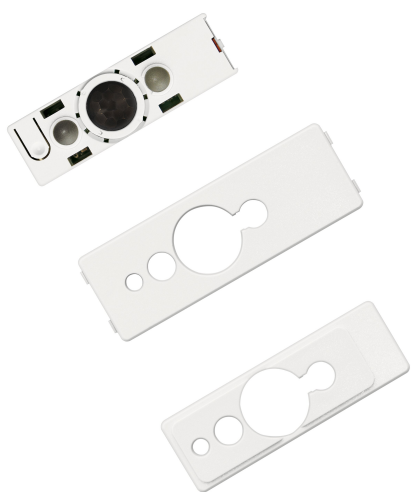


PRODUCT DATASHEET DALI LS/PD LI

DALI LS-PD LI | Control units for light management systems



Areas of application

- Installation in industry and office luminaires
- Ceiling installation via LS/PD CI KIT or LS/PD AP KIT possible

Product benefits

- Small housing design
- Presence detection angle adjustable between 40...90° via integrated shutters

Product features

- Direct connection to DALI
- Light and presence sensor for luminaire installation
- Presence detection via passive IR element
- Light sensor operating range: 20...800 lx (measured at sensor)
- Function indicator with two-color LED
- Mounting height: 2...5 m

TECHNICAL DATA

Electrical data

Nominal voltage	16 V
Mains frequency	0 Hz

Dimensions & Weight

Length	48.00 mm
Width	15.00 mm
Height	17.00 mm
Product weight	10.00 g

Colors & materials

Product color	Grey
---------------	------

Temperatures & operating conditions

Ambient temperature range	-20...+50 °C
---------------------------	--------------

Capabilities

Dimmable	No
Maximum installation height	5 m
Detection area	6 m ¹⁾
Detection angle	80 °
Type of installation	Ceiling integration/Luminaire integration
Operating range, light sensor	20...800 lx

¹⁾ Maximum diameter









Certificates & Standards

Approval marks – approval	CE
Protection class	II
Type of protection	IP20

EQUIPMENT / ACCESSORIES

- Suitable for DALI Professional and DALIeco Control unit
- Attachable mounting frame for luminaire mounting from inside and outside

DOWNLOAD DATA

Documents and certificates		Document name
	User instruction / safety instructions	383606_Manual DALI LS/PD LI (PL-CZ-SK-SL)
	User instruction / safety instructions	377128_Manual DALI LS/PD LI (D-EN-ES-FR-IT)
	User instruction / safety instructions	383607_Manual DALI LS/PD LI (FI-DK-NO-SV)
	User instruction / safety instructions	DALI LS/PD LI
	Declarations of conformity	EU Declaration of Conformity 2019_9C1_2874588_EN_09
	Declarations of conformity	EC-DoC LMS Sensor Coupler and Sensor 9C1-3402820-EN-02 2019
	Declarations of conformity	334811_Declaration of conformity – DALI PRO CONT-4 – DALI PRO PB Coupler – DALI PRO Sen
CAD/BIM files		Document name
	CAD data 3D PDF	341822_CAD Data_DALileco LS/PD LI

LOGISTICAL DATA

Product code	Packaging unit (Pieces/Unit)	Dimensions (length x width x height)	Gross weight	Volume
4052899043954	Folding box 1	160 mm x 40 mm x 35 mm	40.00 g	0.22 dm ³
4052899043961	Shipping box 25	223 mm x 197 mm x 179 mm	1131.00 g	7.86 dm ³

The mentioned product code describes the smallest quantity unit which can be ordered. One shipping unit can contain one or more single products. When placing an order, for the quantity please enter single or multiples of a shipping unit.

DISCLAIMER

Subject to change without notice. Errors and omission excepted. Always make sure to use the most recent release.