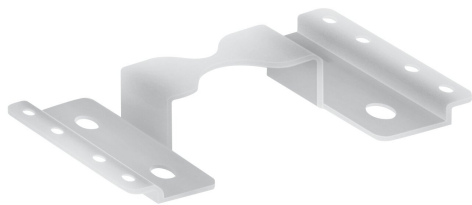


PRODUCT DATASHEET

LN INDV Lightline Connector

LINEAR IndiviLED® LIGHT LINE CONNECTOR | Mechanical connector for light line installation



PERFOR-
MANCE
CLASS

Product benefits

- Easy and quick connection of luminaires for light line installations
- Very solid connector for long operation

Product features

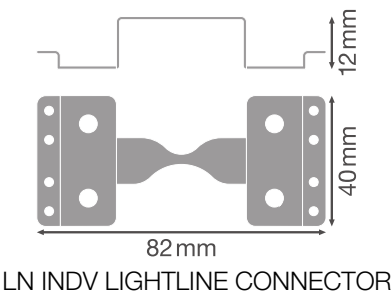
- Mechanical H connector made of steel with screws for light line connection



TECHNICAL DATA

Dimensions & Weight

| | |
|----------------|---------|
| Length | 82 mm |
| Width | 40 mm |
| Height | 12 mm |
| Product weight | 23.00 g |



Materials & Colors

| | |
|---------------|-------|
| Product color | Steel |
| Body material | Steel |

Certificates & Standards

| | |
|----------------|----|
| Ball shot safe | No |
|----------------|----|

DOWNLOAD DATA

LOGISTICAL DATA

| Product code | Packaging unit (Pieces/Unit) | Dimensions (length x width x height) | Gross weight | Volume |
|---------------|------------------------------|--------------------------------------|--------------|-----------------------|
| 4058075133341 | BAG 1 | 130 mm x 90 mm x 20 mm | 28.00 g | 0.23 dm ³ |
| 4058075133358 | Bag for 2nd level 4 | | | |
| 4058075173866 | Shipping box 240 | 210 mm x 300 mm x 170 mm | 7591.00 g | 10.71 dm ³ |

The mentioned product code describes the smallest quantity unit which can be ordered. One shipping unit can contain one or more single products. When placing an order, for the quantity please enter single or multiples of a shipping unit.

DISCLAIMER

Subject to change without notice. Errors and omission excepted. Always make sure to use the most recent release.